

2023/24

# Year 11 Pathway Handbook

[sidcot.org.uk](http://sidcot.org.uk)



Sidcot  
Live Adventurously

# Term dates

## Autumn Term 2023

Induction day	Friday 1 September
Boarders return	Friday 1 September
Term begins	Monday 4 September
Half term begins	Friday 20 October
Boarders return	Sunday 5 November
Term resumes	Monday 6 November
Term ends and Boarders depart	Thursday 14 December

## Spring Term 2024

Boarders return	Sunday 7 January
Term begins	Monday 8 January
Half term begins	Friday 9 February
Boarders return	Sunday 18 February
Term resumes	Monday 19 February
Term ends and Boarders depart	Thursday 28 March

## Summer Term 2024

Boarders return	Monday 15 April
Term begins	Tuesday 16 April
Half term begins	Friday 24 May
Boarders return	Sunday 2 June
Term resumes	Monday 3 June
Term ends and Boarders depart	Thursday 4 July

# Year group nomenclature

<b>Sidcot</b>	<b>National Curriculum</b>	<b>Sidcot</b>	<b>National Curriculum</b>
Reception	Reception	Lower Fifth (L5)	Year 10
J1 to J6	Year 1 to Year 6	Upper Fifth (U5)	Year 11
Third Form (3)	Year 7	Lower Sixth (L6)	Year 12
Lower Fourth (L4)	Year 8	Upper Sixth (U6)	Year 13
Upper Fourth (U4)	Year 9		

# Introduction

The Year 11 Pathway is a great introduction to the UK education system for international students.

The course allows students to sit up to six (I)GCSEs whilst also preparing them for either A Levels or IB. There is a focus on developing English for those in need and the stretch and challenge of completing two year programmes of study in just one year.

Coupled with this are experiences that broaden students' appreciation of the world and introduce them to new ways of thinking and learning, giving them lifelong memories to take on their ongoing educational journey.

Please contact me for any further information and I look forward to meeting you if you are able to visit us.



James Milne  
Head of Pathway and  
Housemaster of Wing House

# Contents

This is your guide to Sidcot School where you'll find everything you need to know if your child is thinking of joining the School.

Term dates and year group nomenclature	1
Introduction	2

## Admissions information

The application process	4
Fees and conditions	5
Opportunities to visit	8
How to get here	9
Fulfilling potential – Scholarships, Bursaries and Learning Support	11
Sidcot School's aims and values	12
What makes a Quaker school different?	13
Centre of Peace and Global Studies	14
Learning adventurously	15
Student success – exam results	16
Leavers' destinations	17
Keeping in touch with parents	19
Equestrian	20
PASS (Programme of Activities at Sidcot School)	21

## Life at Sidcot

Year 11 Pathway courses	24
The Sidcot Learning Wheel	25
School timetables	27
Extra-curricular activities	29
SchoolsBuddy	30
Year 11 sports curriculum guide	31
Induction and first day of term	33
Opportunities to visit and what to bring	34
Photo ID cards and uniform	35
Digital technology in the classroom	36
Is my child allowed to bring a mobile phone to school?	37
Monitoring progress	37
The Blue Book	37
The House system	38
Food	38
Meeting for worship	38
Our policies	39
Sidcot people	40
Sidcot Admissions team	41
Sidcot School campus map	42
Senior School floor plan	43
Notes	45

# The application process

From enquiry to application, our Admissions Team are happy to help you discover whether Sidcot is the right place for your child. The following steps outline the process, though the order may vary according to individual circumstances.

## 1. Research

Request a prospectus or view online.

## 2. Visit

Choose an Open Day, or taster event, or arrange an individual visit. We recommend that all applicants, including those living abroad, visit Sidcot during the admissions process\*.

## 3. Taste

A Taster Day gives your child a chance to have a good look round the School and meet some prospective classmates and teachers. For Junior School students the Taster Programme lasts for two consecutive days. For Pre-School pupils and pupils for Reception, it's a half day session. Taster sessions are an entry requirement for the Pre-School and Junior School but are optional for the Senior School.

## 4. Application

Once you have decided you would like to apply for a place, you need to complete the online application form which includes the payment of a registration fee (Senior £160, Junior £80) along with a copy of your child's most recent school report and passport. If your child requires learning support, you will need to supply the relevant reports about their specific needs – for example, an Educational Psychologist report, or IEP (Individual Education Plan).

## 5. Meet the Headmaster

Iain Kilpatrick likes to meet all pupils who are thinking of coming to Sidcot Senior School, to discuss their motivation for applying, their subject interests and what they can bring to the School. Students applying to Sidcot Junior School will meet Cath Dykes, Head of the Junior School.

## 6. Assessment

We do not use Common Entrance Examinations at Sidcot. All applicants for the Senior School take assessments in Maths and English. These are informal base line assessments, not pass or fail tests, to help determine which teaching group a pupil will enter. A date can be arranged to suit you during the application process.

## 7. Offer

As soon as possible after the interview and completion of assessments, we will contact successful applicants with an offer.

## 8. Acceptance

To accept the place, you should read the Parent Contract and then return the completed Acceptance Form together with the deposit and completed Medical Card. Shortly afterwards we will email our joining instructions which include all the practical details you will need.

## 9. Joining

In July, or just before you start if joining part way through the year, you'll receive further instructions prior to your child's start date including details about which House they will be joining.

\*For overseas applicants we are happy to arrange a video call.

Please note: The admissions process for scholarship and bursary applications is slightly different. Please give us a call for further information.

# Fees 2023/24

## Junior School

### Pre-School

Morning Session – 08:45 to 11:45	£27.00
Lunch for Pre-School pupils	£3.30
Afternoon Session – 12:45 to 15:45	£27.00

### Termly fee

Reception to Year 2	£3,200
Year 3 to Year 4	£3,970
Year 5 to Year 6	£4,780

## Senior School

### Day fees

Year 7 to Year 9	£6,530
Year 10 to Year 11	£6,760

### Termly fee

### Boarding fees

Year 7 to Year 9 UK Students <sup>1</sup>	£11,030
Year 7 to Year 9 Non-UK Students <sup>2</sup>	£11,340
Junior Pathway (Year 8 to Year 9) UK Students <sup>1</sup>	£12,510 <sup>3</sup>
Junior Pathway (Year 8 to Year 9) non-UK Students <sup>2</sup>	£12,800 <sup>3</sup>
Year 10 to Year 11 UK Students <sup>1</sup>	£11,670
Year 10 to Year 11 Non-UK Students <sup>2</sup>	£11,970
Year 11 Pathway UK Students <sup>1</sup>	£14,140 <sup>4</sup>
Year 11 Pathway Non-UK Students <sup>2</sup>	£14,430 <sup>4</sup>

### Termly fee

## Sixth Form

### Day fees

Year 12 & Year 13	£7,180 (£6,760) <sup>3</sup>
-------------------	------------------------------

### Termly fee

### Boarding fees

Year 12 & Year 13 UK Students <sup>1</sup>	£13,200 (£11,670) <sup>3</sup>
Year 12 & Year 13 Non-UK Students <sup>2</sup>	£13,510 (£11,970) <sup>3</sup>

UK bank account holders can pay fees on a monthly basis if you wish. Many parents find it helpful to spread the cost of fees by paying 10 monthly instalments by direct debit. The Direct Debit application deadline is 30 June. You can also pay by debit card. Please contact [feesenquiries@sidcot.org.uk](mailto:feesenquiries@sidcot.org.uk)

- 1 UK/Non-Visa Students - Those students with a UK Passport (and those with settled/pre-settled status) or EU Students joining the school for 6 months or less.
- 2 Non-UK/Child Visa Students - Those students without a UK passport who require a Child Visa in order to study in the UK.
- 3 Loyalty Discount – Students who have taken the two year GCSE course at Sidcot will continue to pay the Year 10/11 rate if they continue their studies into the Sixth Form. Junior Pathway students will receive a £3,500 loyalty discount if they continue their studies at Sidcot after completing the full 1 year Pathway programme. This discount will be applied to the fees of the first term after completion of the course.
- 4 Cost includes a portable touch screen computer to assist with teaching and learning.

# Summary of fees

UK bank account holders can pay fees on a monthly basis if you wish. Many parents find it helpful to spread the cost of fees by paying 10 monthly instalments by direct debit. The Direct Debit application deadline is 30 June. You can also pay by debit card. Please contact [feesenquiries@sidcot.org.uk](mailto:feesenquiries@sidcot.org.uk) for further information.

## Deposit

A deposit of £1,000 is payable when any UK student is accepted. The deposit for overseas students and Y11P is £5,000. This deposit is in addition to the normal termly fee and is due on acceptance of a place offered. The deposit is refunded when the student finally leaves the school, once all fees and extras have been settled.

## Registration fee

To be considered for a place at Sidcot, a registration fee of £160 (£85 Sidcot Junior School and Pre-School) is payable to cover the administration costs of the application. All registration fees are non-refundable.

## Junior day fee

The Junior day fee includes snacks and the majority of after school activities. After School Care is free for the first hour up until 16:30 and £2.25 is charged per half hour from 16:30 until 18:00. Those in After School Care are welcome to have supper at a cost of £2.25 in the Refectory at 17:30. Breakfast Club provides supervision from 07:45 to 08:30 and includes a varied breakfast in the Refectory at a cost of £3.30.

## Senior day fee

The Senior day fee includes tuition, supper (if your child stays on for activities and prep after school), most extra-curricular activities (except individual specialist tuition and certain specialist activities).

## Boarding fee

The boarding fee includes all of the above plus full board, laundry, healthcare and most extra-curricular activities (except individual specialist tuition).

Flexi boarding and weekly boarding are offered subject to availability. Prices and details are available on request and can be found on the school website.

NOTE: fees are reviewed annually in the Spring – any changes will be featured on our website: [sidcot.org.uk/admissions/fees](http://sidcot.org.uk/admissions/fees)

Each year a voluntary £10 donation to the SCPTA (Sidcot Community Parent and Teacher Association) fund will be added to your Spring Term Extras Invoice to support the initiatives of this highly important organisation in the school.

## Visas

Applicants who do not hold a UK passport and who plan to stay longer than 6 months will need to apply for a Child Visa. Sidcot School uses Newland Chase, a UK immigration law specialist, to support families through this process.

## Extras

Parental permission will be sought for any trip or activity which incurs a charge of more than £20.



# Additional fees

## Specialist tuition

Sidcot School offers specialist tuition in a wide range of subjects and activities including Music, Drama, Sports and EAL. Learning Support is available for those with a desire for booster lessons or with specific learning needs. If you would like or need specialist tuition please see the relevant Department Head to organise and book the lessons for the following term.

## Additional charges for individual and group lessons

For Music lessons, charges are payable in arrears. Lessons missed through school trips will, wherever possible be rescheduled. However, lessons that are missed without notification to the relevant member of staff or due to pupil sickness or non receipt of payment will not be rescheduled. A four-week notice of cessation is required in writing to the Director of Music, Sidcot School, Oakridge Lane, Winscombe, North Somerset, BS25 1PD.

The hourly rate for all individual lessons is £42.00, including EAL and Learning Support. The hourly rate for group lessons is £23.00.

## Flexi boarding

Recognising the changing needs of families, our approach to boarding is flexible. As well as full boarding, options for both weekly and flexi boarding may be available.

Whilst the majority of our boarders are full time, we are happy to discuss other options to meet particular needs.

The cost of flexi boarding is £48.00 per night.

## Examination charges

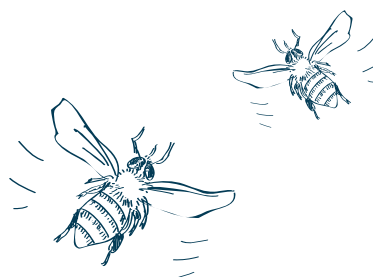
Examination Board charges and any access administration charges for external exams (GCSEs, etc.) which are incurred by the school, are charged to parents. They are billed in advance or in arrears, depending on the exam. For those taking IB, the examination charge is approximately £700. University application fees are also passed on to parents through our billing system, if the student/parent does not pay for their application directly.

## School Bank details

The School will let you know in writing if they are going to change their bank details. To avoid the potential of fraudulent activity, if you do receive such a notification, please ensure that you check the details against those held on the parent portal.

## Sibling discounts

A 10% discount is given to children who already have one sibling at the school and will be deducted from the lowest fee at that time.





# Opportunities to visit

We want to give you the opportunity to get know Sidcot, to find out if it feels the right place for you and your child. We offer various open events and tasters where you take a good look around, experience life at the School, and meet the students and staff.

## Open Mornings

Open Mornings provide a chance to visit the Junior and/or Senior School. You can explore the campus, see the facilities, meet students, parents and staff, and get a feel for the unique Sidcot atmosphere. We have one Open Morning each term, see our website for the latest details.

## To contact our Admissions Office

01934 845236  
admissions@sidcot.org.uk  
sidcot.org.uk to register online

## Personal tours

If you'd prefer a personal tour we are happy to arrange a date and time to suit your requirements.

Please refer to our website for the latest schedule of events and opportunities to visit the School.



# How to get here

## BS25 1PD

### From Bristol:

Sidcot is situated on the A38, 15 minutes south of Bristol International Airport. Drive past the airport and through the villages of Churchill and Star. Shortly after Star, at the brow of the hill take the left turning signposted Sidcot. The main School Reception entrance is 100m on the right, where there is parking for visitors.

### From London:

Take the M4 to Bristol then follow the M5 southbound and leave at junction 21, taking the turning for Weston-super-Mare at the roundabout. Continue on the dual carriageway towards Weston-super-Mare. At the 2nd roundabout take the left turn, signposted for Banwell. Continue straight along this road through Locking, Banwell and eventually Winscombe. Once through Winscombe village the road intersects the A38 at a junction with traffic lights. Go straight over this junction into Fountain Lane. At the top of the lane turn left and the main school Reception is the first on the left, where there is parking for visitors.

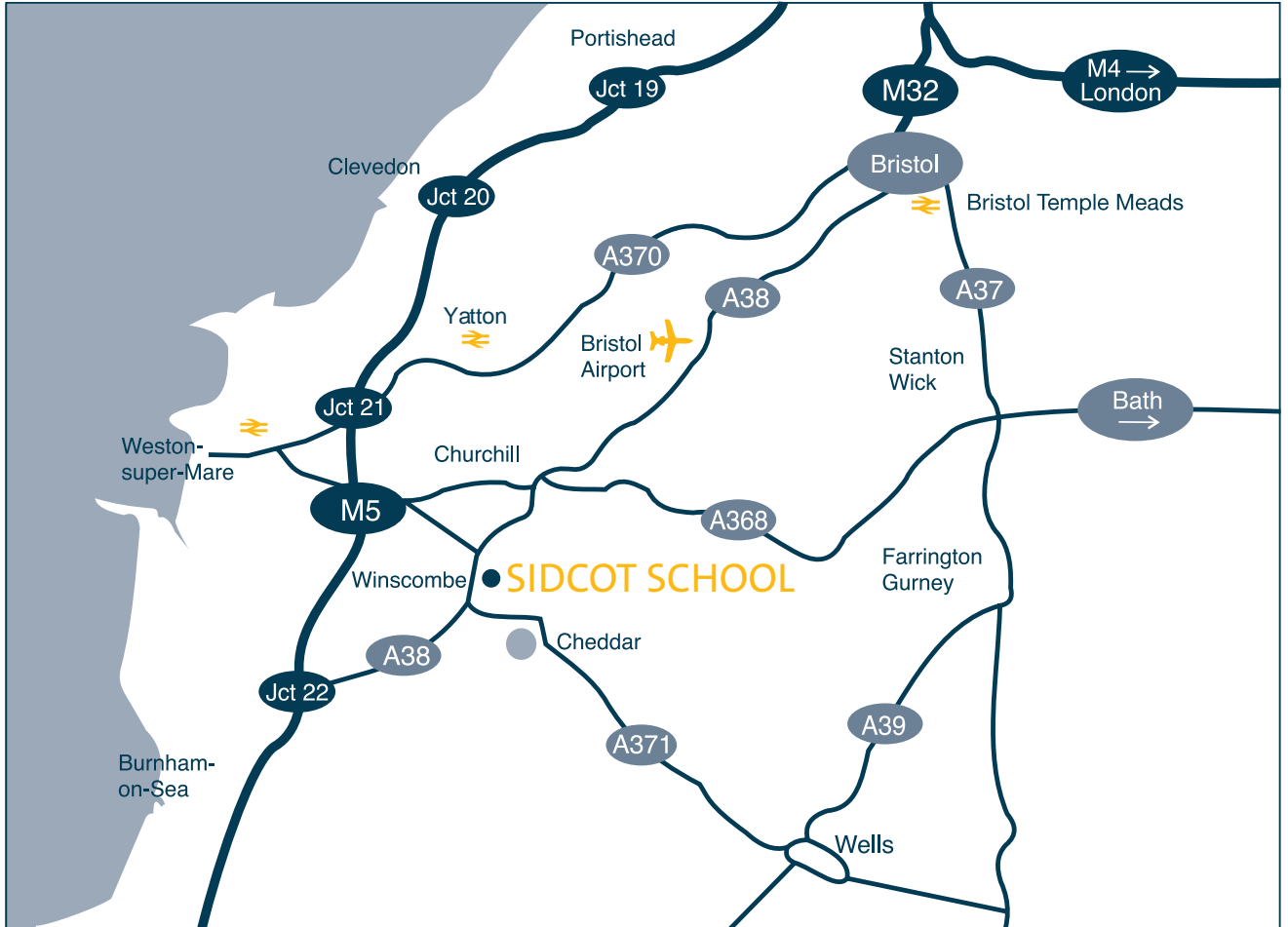
### From the South:

Leave the M5 motorway at junction 22 and proceed north on the A38 towards Bristol. Continue through Rooksbridge, Tarnock and Lower Weare until you reach the first junction with traffic lights (Winscombe will be signposted to your left). At the traffic lights, turn right into Fountain Lane. At the top of the lane, turn left and the main School Reception is first turning on the left, where there is parking for visitors.

### From Wells:

Drive west on the A371 from Wells via Cheddar, as signposted to Weston-super-Mare. At the junction to the A38, turn right and follow signs to Bristol. At the first set of traffic lights, turn right into Fountain Lane. At the top of the lane, turn left and the main School Reception is first turning on the left, where there is parking for visitors.





# Fulfilling potential

## Scholarships

New pupils have the opportunity to apply for a scholarship worth up to 10% off tuition fees on the basis of evidence of exceptional recent achievement, performance in the scholarship test and an interview with a scholarship panel at the stages outlined below.

- Senior School – on entry to Years 7, 8, 9 and 10
- Sixth Form – on entry to Year 12

Sidcot students currently in Year 6 or Year 11 can also apply for a scholarship as they are in transition to Senior School and Sixth Form respectively.

There are three categories of scholarship:

1. **Academic**
2. **Talent:** Art, Design Technology, Drama, Music, Sport, Equestrian.
3. **All-rounder:** where a student demonstrates significant potential in more than one area.

Please see the website for full details of our Scholarships Policy and Procedure:

[sidcot.org.uk/scholarships](http://sidcot.org.uk/scholarships)

## Scholarship dates

Sixth Form applications should be submitted by the end of October. Scholarship tests and interviews will take place in November. Senior School Scholarship applications should be submitted early in January. Scholarship tests and interviews will take place later in January.

Please refer to the website for exact dates and more details. The Scholarship Policy and application form are available to download on the Admissions section of our website under Scholarships and Bursaries.

## Bursaries

Bursaries take the form of means tested discounts for new (and sometimes existing) students. These are intended to help a child enter the School and the majority will continue for the duration of their time at Sidcot. Others offer short-term support and may be available in cases of unexpected financial hardship.

Applications for September must be made by early January (please see website for deadline dates). Bursaries are reviewed annually and are awarded in line with our Bursary Policy and Procedure. The Bursary Policy and Procedure document and application form are available to download on the Admissions section of our website under Scholarships and Bursaries.

## Learning Support

Our Learning Support Department forms a strong part of the pastoral system and reflects the caring ethos for which Sidcot School is well known. The School is registered with CReSTeD (The Council for the Registration of Schools Teaching Dyslexic students) and is highly experienced in providing support to students with mild to moderate learning support needs. The department provides extremely high quality specialist teaching and support. The focus is on improving literacy and/or mathematical skills to enable students to engage with the mainstream curriculum and to become independent learners. Staff in the department also act as advocates for individual students in their relationships with teaching staff and other students.

We request that parents supply reports relating to their child's specific learning needs – for example, an Educational Psychologist report, or IEP (Individual Education Plan), plus a school report. These reports need to be submitted early in the admissions process – certainly prior to interview. The pupil may be required to meet the Head of Learning Support after the reports have been considered. Learning Support is charged on a pay as you go basis at the end of each term.

# School Aims and Values

Sidcot School aims to be a pioneering school, a world-class centre of excellence where education is as much about nurturing the spirit as it is about achieving outstanding academic success.

This vision is enshrined in the Testimonies of the Religious Society of Friends (Quakers). These Testimonies act as a touchstone and a challenge to the whole school community; those with faith and those without, all of whom are equally welcomed.

## Our Values

### Truth and Integrity:

We cherish the truth which enables our young people to develop integrity in what they do and what they think, helping them to build meaningful, lasting relationships.

### Equality and Community:

We believe all people are of equal worth and aim to build a truly international community that values all individuals and answers the good in everyone.

### Peace:

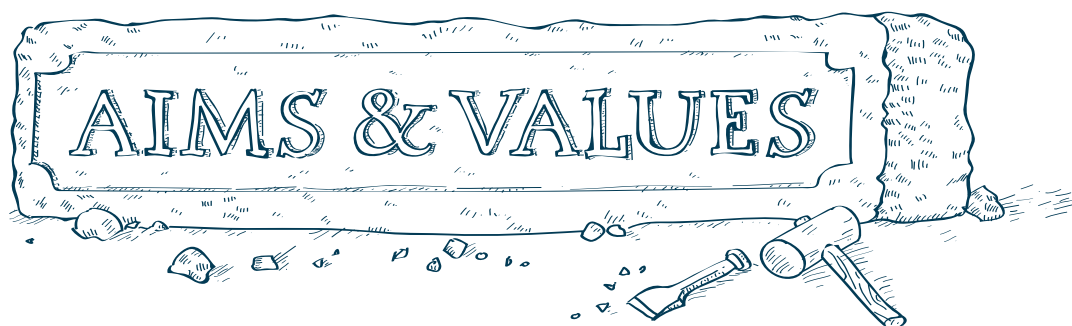
We encourage our young people to adopt peaceful methods of dealing with conflict in all its forms, taking both individual and collective responsibility in resolving differences.

### Simplicity:

We believe in living simply and adventurously, placing charity and concern for others at the centre of what we do.

### Sustainability:

We believe it is our responsibility to protect the Earth and to teach our young people to treasure and preserve it across the generations.



# What makes a Quaker school different?

Since its foundation, the values of the Society of Friends have been at the heart of Sidcot School. Quakers believe in living life adventurously and letting their lives speak.

In practice that means an approach to teaching that encourages individual thought and exploration, whilst making sure all students have the support they need to grow as individuals with their full range of talents recognised and celebrated.

## 'Let your life speak'

Young people in Quaker schools are encouraged to be outward looking and adventurous, to participate fully in the life of the School and to be of service to the community. Emphasis is placed on the way students and staff lead their everyday lives and how they treat others. Mutual respect and concern for the natural world and the environment are integral to Quaker beliefs.

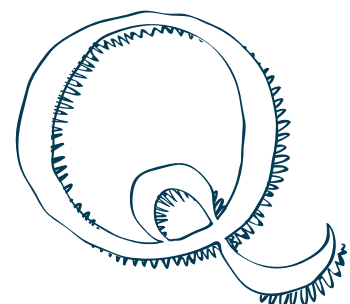
## Finding the best in everyone

With the belief that there is 'that of God' in every person, the Quaker philosophy to education aims to ensure that:

- Every student is approached with optimism.
- Individuals are encouraged to believe in their own 'immense potential'.
- Methods of discipline are based on trust, mutual support and a desire to promote the positive.
- Responsibility is encouraged, as is questioning, exploration, honesty and openness.

## How will your child benefit from an education in a Quaker school?

- By being encouraged to work hard and make the most of opportunities, both inside and outside the classroom.
- By learning in an atmosphere of friendliness and openness, where relationships are based on trust and on the expectation of sensible, thoughtful behaviour.



# Centre for Peace and Global Studies

Peace education is embedded throughout Sidcot, without structured lessons, but a way of life, of being. Our aim is to create a school filled with PeaceMakers and ChangeMakers.

We facilitate learning, give voices and ways to follow through on the things we say are important. We want students to be able to discern and to be able to ask questions about what they see and hear.

We know in the culture of a busy school it is vital to engage students and staff with the essential elements of peace, those of tolerance, acceptance, empathy and understanding. Communicating our Quaker values has always been a key part of our educational approach. Our Centre for Peace and Global Studies aims to bring 21st Century Quakerism to life. Within the curriculum and

throughout the school we encourage students to look into the community and the wider world.

Throughout the year there are talks, films and cultural activities which enrich the curriculum and offer students an opportunity to think about social and environmental justice.

We have a yurt village that offers an alternative learning environment in which students immerse themselves in issues that matter. We also offer the use of the yurts to the local community and charities.

---

Students are learning the essential skills of empathy, creativity, leadership, and teamwork at Ashoka Changemaker Schools so that they can thrive in the modern world and find solutions to our most complex problems. Ashoka Changemaker Schools enable all students to become changemakers—young people who have the skills and confidence to change the world for the good of all. Ashoka Changemaker Schools.



# Learning adventurously

At Sidcot we're lucky to have a stunning rural location and top class facilities for sport, arts, crafts and environmental studies, as well as links with local community groups, charities and business.

## Arts

Sidcot Arts Centre bridges the traditional genres with the latest technology and state of the art facilities for fine art, music, drama, sculpture, photography and digital media. Our music school has a dedicated performance hall, practice rooms, a recording studio and music technology suite. Our drama department has the facilities to produce performances on stage, radio or film.

We are delighted to have been awarded the Arts Council England's most prestigious Gold Award which recognises Sidcot's success in developing students' creativity.

## Sports

A whole range of sports are on offer at Sidcot: football, rugby, hockey, cricket, netball, tennis, athletics, horseriding, fencing, golf, basketball, table tennis and many more. We have a busy fixtures list throughout the year playing competitively against local schools with some excellent results. In the Sports Centre students have use of a superb 25-metre indoor heated pool, a multi-gym and sports hall.

## Extra-curricular

At Sidcot the classroom is just the beginning. During lunchtime or after the school day, students can take part in a wide range of activities. As well as sport there are pop and classical choirs, bell ringing, chess, jazz band and photography to name but a few.

## Duke of Edinburgh's Award

Each year around 160 students take part in this world renowned scheme. It places great emphasis on self-motivation and helps students develop confidence and responsibility. Completion of the award gives students a sense of achievement and, with a Gold Award being seen as an equivalent to an A Level, it can provide a valuable contribution to their university application.

## Working in the community

Working to support charitable organisations is part of our Quaker values. Students are involved in organising events for Red Nose Day, Children In Need, Macmillan Cancer Support and local charities. We believe this experience is essential to develop maturity and empathy.

## Careers

Helping students prepare for life after school is a priority at Sidcot. We have a full time careers advisor who works with Senior School students in groups and on a one-to-one basis to support long term choices and decision making. All students have access to impartial careers and educational guidance and the latest careers and Higher Education resources. External speakers are also regularly invited to offer students the benefit of their experience and extensive UCAS support is provided to students applying to UK universities, with additional support for those applying overseas. Assistance is also provided to those students considering other options including gap years, apprenticeships and internships. Members of the School community are invited to join Sidcotians Connect – a networking database that enables current and former students, staff and parents to seek mentoring, work placements and internships.



# Student success 2022

## External examination results

This information gives an indication of how the School has performed in external examinations.

### GCSE

9 to 7 (A\* to A) 39.4% 9 to 4 (A\* to C) 92.0%

- 15 students achieved nine or more passes at grades 7-9
  - 100% of Sidcot students achieved 7 to 9 grades in Further Maths & 3D Design
- 

### International Baccalaureate Diploma

Sidcot mean score 35.2%

- One student achieved a top score of 41 out of a possible 45
  - Sidcot continues to significantly over achieve the world average
- 

### A Level

A\* to A 38% A\* to C 76%

- One student achieved five A\* to A grades
  - Four students achieved three A\* to A grades
- 

### BTEC Sport

- 100% pass rate
  - 100% of students achieved Distinction and above
  - One student achieved a top score of Distinction\*, Distinction\*
- 

### BTEC Business

- 100% pass rate
  - 67% of students achieved Distinction and above
  - One student achieved a top score of Distinction\*, Distinction\*
- 

### Extended Project Qualifications (EPQ)

A\* to A 57% A\* to C 86%

The EPQ, or Extended Project Qualification, offers students the opportunity to produce a project on a topic of their choice and provides the equivalent of half an A Level. Each student will embark on a largely self-directed and self-motivated project taking responsibility for choosing a topic, planning, researching and developing their ideas into a finished product.

# Leavers' destinations 2022

At Sidcot we take a great deal of pride in supporting students to progress to employment or the next stage of their academic journey. Of those students going to university in 2022, 94% of applicants were successful in gaining a place at their first choice institution.

## Institution

Bath Spa University  
Cardiff Metropolitan University  
Central St Martins University Arts London  
City, University of London  
Courtauld Institute of Art,  
University of London  
De Montfort University  
Durham University  
EU Business School Barcelona  
Florida International University  
Liverpool John Moores University  
  
Loughborough University  
Manchester Metropolitan University  
Northumbria University, Newcastle  
Nottingham Trent University  
  
Oxford Brookes University  
Royal Central School of Speech and Drama,  
University of London  
Royal Welsh College of Music and Drama  
SOAS University of London  
St Mary's University, Twickenham  
The Academy of Contemporary Music  
UCL (University College London)  
University Arts London  
University of Applied Sciences,  
Regensburg Germany  
University of Bath

## Course

Product and Furniture Design (Professional Placement Year)  
Interior Design  
Fine Art  
Banking and International Finance (with Professional Placement)  
History of Art  
  
Law LLB  
Business and Management  
Business and Marketing  
Business/Fashion Branding  
Accounting and Finance  
Criminology and Psychology  
Sport and Exercise Psychology (with placement year)  
Advertising and Brand Communications  
Entrepreneurship  
Furniture and Product Design  
Interior Architecture and Design  
Marketing and Events Management  
Acting  
  
Design for Performance  
Economics (BA)  
Theology, Religion and Ethics  
Game Development: Programming  
Biomedical Sciences  
Design Management  
International Management and Modern Languages - German  
  
Chemical Engineering with Environmental Engineering  
(with Placement)

## Institution

University of Birmingham  
University of Brighton  
University of Cambridge  
University of Edinburgh  
University of Gloucestershire  
University of Greenwich  
University of Leeds  
University of Liverpool  
University of Manchester

University of Northampton  
University of Portsmouth  
University of Reading

University of Surrey  
University of Sussex  
University of the Arts London  
University of West London  
University of Westminster  
University of York

## Course

Liberal Arts and Sciences  
Civil Engineering with Construction Management  
Psychological and Behavioural Sciences  
English Literature  
Urban Planning  
Business Psychology  
Zoology  
Psychological Sciences  
Biosciences and Modern Languages  
Electrical and Electronic Engineering  
History and French  
International Business, Finance and Economics  
Sociology and Spanish  
Criminology  
Environmental Science  
Biochemistry  
International Business and Management with a  
Modern Language with Year Abroad  
Zoology with Foundation  
Mechanical Engineering  
Business and Management Studies  
Jewellery Design  
Business Studies with Entrepreneurship  
Film  
Physics with Astrophysics (with a year in Industry)

# Keeping in touch with parents

We make every effort to provide parents with useful dates and information as well as news of what is happening at school.

## Newsletter

All parents receive a weekly newsletter summarising all that is happening across the School. Each newsletter includes a message from the Head, as well as news about trips and visiting speakers, and updates on performances and achievements from different departments.

## Intranet

Parents are given a log-in which enables them to view the School intranet where students and teachers share information and homework. They can access information about their child's timetable, and keep up to date with their homework, performance and attendance.

Please find below a link to the Login Guide to the Intranet which will be available to parents from the first day of term:

<https://online.fliphtml5.com/uqyo/rdru/>

## Calendar

The School community has access to a live electronic calendar which provides the latest and most up to date information about events, activities, trips and sports fixtures:

[sidcot.org.uk/calendar](https://sidcot.org.uk/calendar)

# Equestrian

Sidcot Equestrian Centre is another gem the School has to offer to students who pursue riding as a sport.

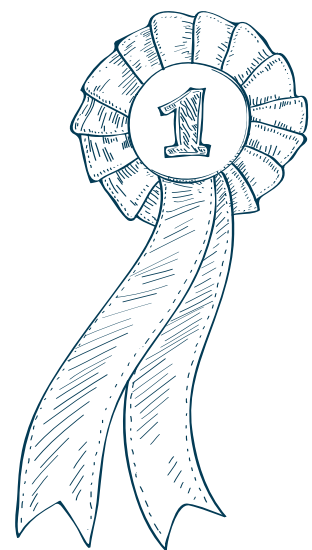
Nestled within 150 acres of beautiful Somerset countryside, students' horses are allowed to live as natural a life as possible. All year turnout is available which ensures the horses are both relaxed and happy. Horse welfare is paramount and care is provided by a team of qualified experienced staff who run a high quality establishment.

Sidcot offers a rare combination: a school livery yard in the heart of a thriving co-ed day and boarding school. Students who bring their horses to Sidcot are encouraged to spend as much time as possible at the stables to further develop their equine knowledge. Each week, students are invited to equine tutorials which cover all topics including, for example, scales of training and nutrition. Our friendly staff are always on site to assist and chat in a relaxed environment.

For students who want to develop particular skills, we offer the facility for specialist training including dressage, show jumping and cross-country. All our instructors are highly qualified.

The Equestrian Centre boasts some great facilities:

- Stabling for up to 15 horses
- 150 acres of pasture
- 30 x 40m floodlit arena
- Shower and solarium
- Farrier bay
- BSJA show jumps
- Cross-country course



# PASS

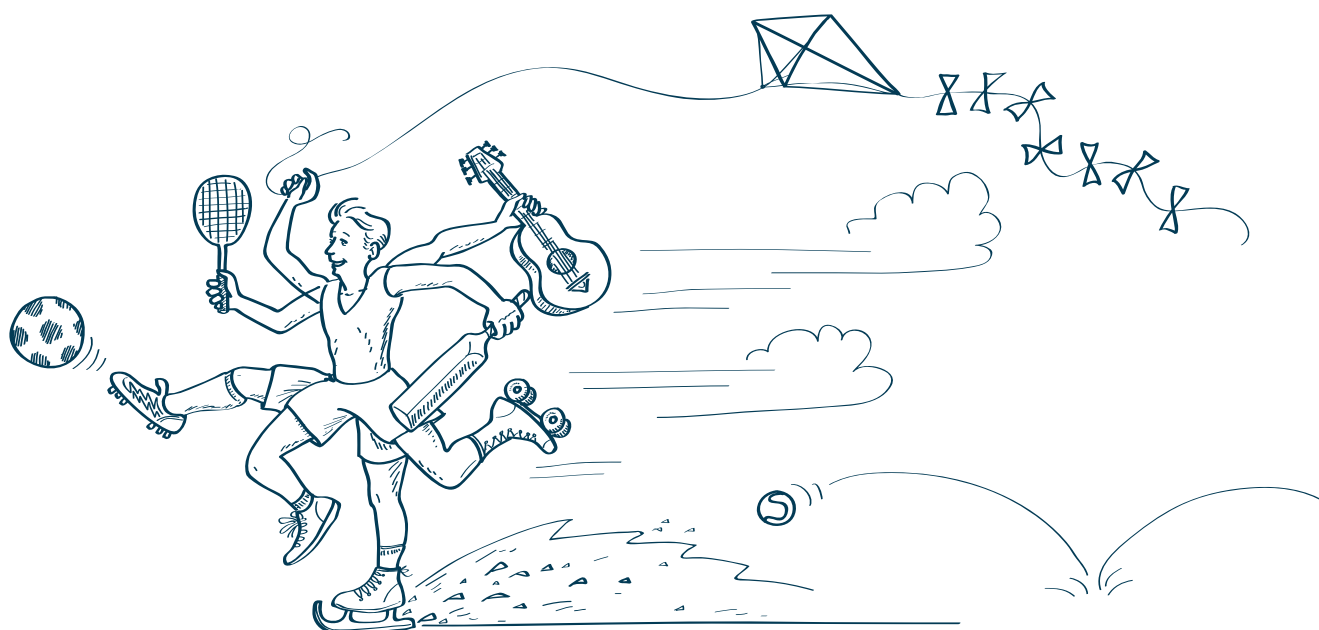
## (Programme of Activities for Sidcot Students)

The Programme of Activities for Sidcot Students (PASS) has been designed to provide all students throughout the school with an exciting opportunity to live adventurously, to live out the school's core values, to play an active part in being an Ashoka Changemaker school, to develop leadership skills and to further enhance their ability to be excellent team players.

The programme has been designed to be fun and active which will help boost the health and wellbeing of our students. It will enable them to be happy, positive individuals and equip them with the skills and attitude to be able to thrive at school and enjoy their learning experience.

The students have the opportunity to opt into a range of activities on Thursday afternoons throughout the school year alongside their peers across the whole school. The vertical nature of this programme (Third Form to Sixth Form) promotes the Sidcot community spirit throughout, allowing them to live, learn and grow alongside one another in a supportive environment.

Students choose the activities that they would like to do every half term and are strongly encouraged to choose a range of activities to challenge themselves and their thinking. They will be encouraged to try something new or to develop and build on skills they already have. The programme will enable them to grow in confidence, build resilience, make new friendships and have fun. Some activities will enable students to gain a greater understanding of the world we live in, the need for change and how they can play a part in that change. They will grow a love for the outdoors and for the simple things in life.



The following activities are an example of what's on offer for our students to choose during PASS on a Thursday afternoon.

Live adventurously	Team and Leadership	Quaker Peace and Global	Health and wellbeing
Kayaking	Water polo	Equality group	Badminton
Canoeing	Hockey	Sustainable crafts	Singing
Bouldering	Tennis	Debating	Walking
Climbing	Rugby	Public speaking	Swimming
Paddle boarding	Football	Model United Nations	Pilates
Skateboarding	Cricket	Changemaker projects	Dance
Fossil Hunting	Volleyball	Gardening	Fitness
Cycling	Performing arts	Bushcraft	First Aid
Horse riding	Girls football	Conservation	Elite Sports mentoring
D of E	Girls rugby		Board games
Golf	D of E		Lego
Frisbee Golf			Art
Archery			Chess
Science			

# Life at Sidcot...





# Year 11 Pathway Courses

Year 11 Pathway is a special one-year course that gives international students an excellent preparation for entry into the Sixth Form.

To achieve up to six (I)GCSEs in a year, students will study in specialist classes with experienced teachers to help them achieve the best results. These classes are dedicated Year 11 Pathway lessons to ensure students receive the necessary intensive support to cover all the material in one year.

In order to encourage integration, all other activities and some subjects, including tutor groups and sport, are taken with the rest of Year 11.

When students arrive at Sidcot we assess them and place them in English and Maths classes according to ability. The number of (I)GCSEs that they take will depend on their ability, their level of English and their plans for the next stage.



Below shows an outline of the available courses.

## CORE

<b>IGCSE</b> English Language	<b>OR</b>	<b>IGCSE</b> English as a Second Language
<b>IGCSE</b> Maths Extended	<b>OR</b>	<b>IGCSE</b> Maths Core

## OPTIONS

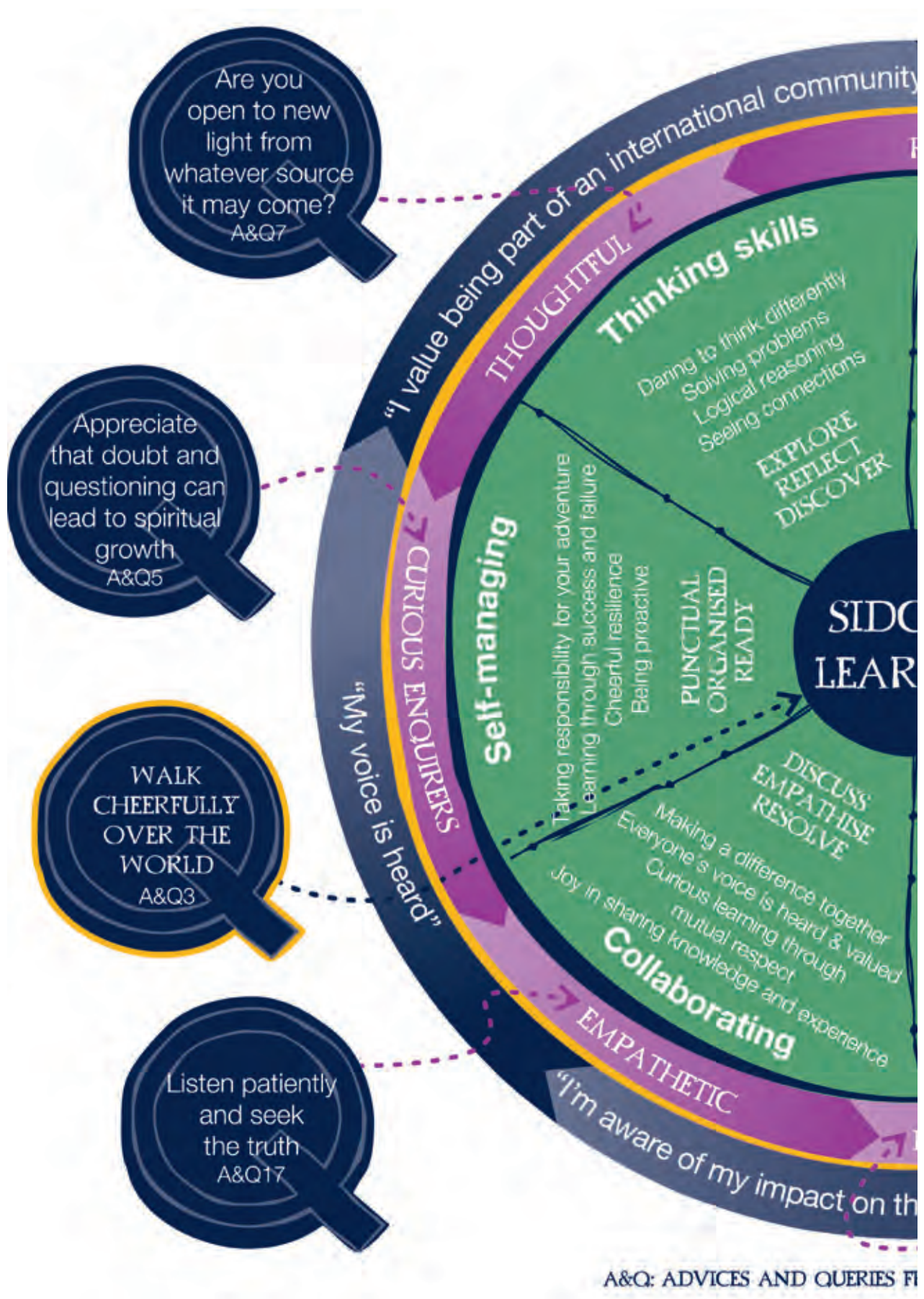
<b>IGCSE</b> Physics	<b>OR</b>	<b>IGCSE</b> Humanities (History or Geography*)
<b>IGCSE</b> Chemistry	<b>OR</b>	<b>IGCSE</b> Art
<b>IGCSE</b> Biology	<b>OR</b>	<b>IGCSE</b> Business Studies

## ENRICHMENT

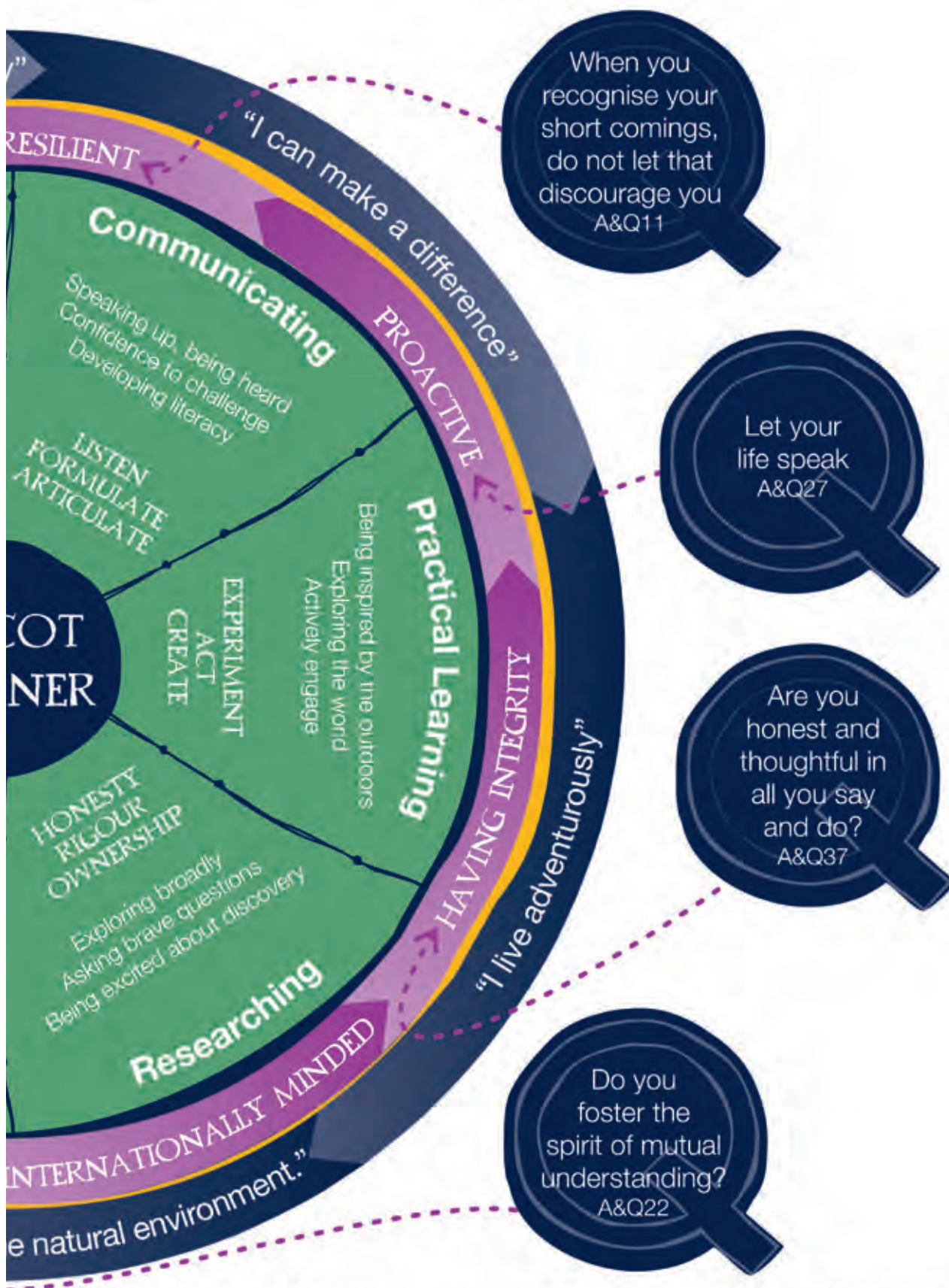
<b>Global Studies</b> Sidcot Certified Course .....
<b>IGCSE</b> In your own Language (If available) .....
<b>The Duke of Edinburgh Bronze Award</b>

\* Places on History or Geography courses are subject to availability and allocated on a first-come, first-served basis.

# Our approach to teaching and learning



# The Sidcot Learning Wheel



# School routine

## Monday

08:30 – 08:35 Tutor Time

08:35 – 09:25 Period 1

09:25 – 10:15 Period 2

10:20 – 11:00 Assembly

11:05 – 11:25 Break

11:25 – 12:15 Period 3

12:15 – 13:05 Period 4\*

12:55 Lunch (Y7)

13:00 Lunch (Y8)

13:05 – 13:55 Lunch  
(all other years)

13:55 – 14:10 Tutor Time

14:10 – 15:00 Period 5

15:00 – 15:50 Period 6

16:00 – 16:50 Activities/Prep

17:00 – 18:00 Activities/Prep

17:45 – 18:30 Boarders' Supper

## Tuesday

08:30 – 08:35 Tutor Time

08:35 – 09:25 Period 1

09:25 – 10:15 Period 2

10:15 – 11:05 Period X

11:05 – 11:25 Break

11:25 – 12:15 Period 3

12:15 – 13:05 Period 4\*

12:55 Lunch (Y7)

13:00 Lunch (Y8)

13:05 – 13:55 Lunch  
(all other years)

13:55 – 14:10 Tutor Time

14:10 – 15:00 Period 5

15:00 – 15:50 Period 6

16:00 – 16:50 Activities/Prep

17:00 – 18:00 Activities/Prep

17:45 – 18:30 Boarders' Supper

## Wednesday

08:30 – 08:35 Tutor Time

08:35 – 09:25 Period 1

09:25 – 10:15 Period 2

10:15 – 11:05 PSHE/  
Pastoral Time

11:05 – 11:25 Break

11:25 – 12:15 Period 3

12:15 – 13:05 Period 4\*

12:55 Lunch (Y7)

13:00 Lunch (Y8)

13:05 – 13:55 Lunch  
(all other years)

13:55 – 14:10 Tutor Time

14:10 – 15:00 Period 5

15:00 – 15:50 Period 6

16:00 – 16:50 Period 7  
Activities/Prep

17:00 – 18:00 Activities/Prep

17:45 – 18:30 Boarders' Supper

- \* Y7 & Y8 go to lunch slightly earlier.
- PSHE = Personal, Social, Health and Economic lesson
- Meeting for Worship: The School community gathers in the Quaker Meeting House and sits in stillness to listen and reflect.

## Thursday

---

08:30 – 08:35 Tutor Time

---

08:35 – 09:25 Period 1

---

09:25 – 10:15 Period 2

---

10:15 – 11:05 Period X

---

11:05 – 11:25 Break

---

11:25 – 12:15 Period 3

---

12:15 – 13:05 Period 4\*

---

12:55 Lunch (Y7)

13:00 Lunch (Y8)

13:05 – 13:55 Lunch  
(all other years)

---

13:55 – 14:00 Tutor Time

---

14:00 – 16:00 PASS  
(Co-Curricular  
Time)

---

16:00 – 16:50 Period 7  
Activities/Prep

---

17:00 – 18:00 Activities/Prep

---

17:45 – 18:30 Boarders' Supper

---

## Friday

---

08:30 – 08:35 Tutor Time

---

08:35 – 09:25 Period 1

---

09:25 – 10:15 Period 2

---

10:20 – 11:00 Meeting for Worship

---

11:05 – 11:25 Break

---

11:25 – 12:15 Period 3

---

12:15 – 13:05 Period 4\*

---

12:55 Lunch (Y7)

13:00 Lunch (Y8)

13:05 – 13:55 Lunch  
(all other years)

---

13:55 – 14:10 Tutor Time

---

14:10 – 15:00 Period 5

---

15:00 – 15:50 Period 6

---

16:00 – 16:50 Activities/Prep

---

17:00 – 18:00 Activities/Prep

---

17:45 – 18:30 Boarders' Supper

---

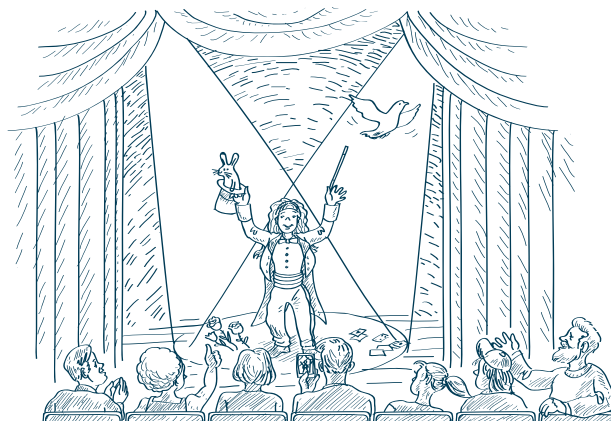
- 'PASS' (Programme of Activities for Sidcot School); a wonderful co-curricular programme based on our key themes of Living Adventurously, living out our Quaker values, being an Ashoka Changemaker school and providing opportunities to develop leadership skills and team building. Students will have the opportunity to choose the activities that they wish to join in throughout the year. Students across the whole school will participate in the activities alongside each other thus promoting community spirit through the vertical structure of the programme.

# Extra-curricular activities

At Sidcot we're lucky in having an excellent rural location and top-class facilities for sport, arts, crafts and environmental studies, as well as links with local community groups, charities and businesses.

Activities run at lunchtime, after school, after tea and into the evening. With activities ranging from archery to trampolining, maths club to riding, we make sure our students have plenty of opportunities to try new things as well as developing existing interests.

Below is a sample list of activities. This list is updated every term and will also include a full range of sport activities depending on the season.



- Riding
- Archery
- Climbing
- Caving
- Open Mic Club
- Glass Making Workshop
- Singing Group
- Music Tech Club
- Painting
- Photography
- Drama Rehearsals
- Multi-Gym
- Lane Swimming
- Trampolining
- Fencing
- Art – Open Studio
- Book Club
- Tennis Club
- Music Theory Club
- Tabletop Games Club
- Circuits
- Mixed Golf
- Ceramics
- Design & Technology Club
- Fee Swimming
- Library Study
- Maths Café
- Pottery

# SchoolsBuddy

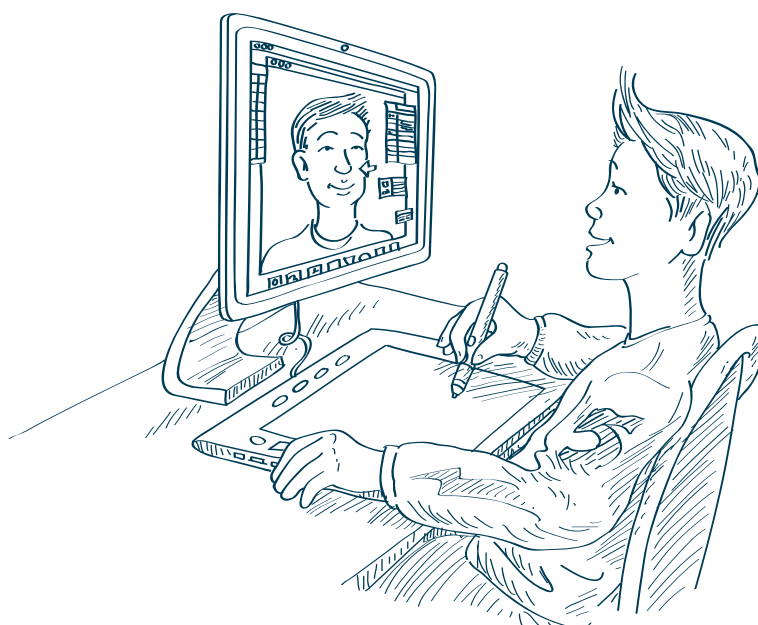
SchoolsBuddy allows our parents and students to view the range of activities available to our students. The system allows your child to easily book onto our lunchtime and after-school activities and into our early and late prep sessions.

All new parents and students will receive a SchoolsBuddy activation email, so please look out for it in your mailbox. This system will be activated on the first week of term. As this is a new software system, you will be required to click on the link in the email to activate your SchoolsBuddy account.

Once you have registered you will be able to view the co-curricular activities and early and late prep sessions available.

Please activate using the Google Chrome Web Browser. Once your account is activated, you can then download the 'SchoolsBuddy' app on iOS or Android.

Should you have any questions please contact:  
**[ITSupport.Parents@sidcot.org.uk](mailto:ITSupport.Parents@sidcot.org.uk)**



# Year 11 Boys PE and Games

This programme is subject change.

## COMPETITION PATHWAY

	Term 1a		Term 1b		Term 2a	Term 2b	Term 3a	Term 3b
	9	Rugby – Sports Fields and 3G	Res Run	Rugby - Sports Fields and 3G	Football - Sports Fields/3G	Football - Sports Fields/3G	Hockey- Astro Turf	Student Choice
10	Baseline Fitness and Training Methods - Sports Hall		Swimming		Student Choice	Student Choice	Student Choice	

## HEALTH AND FITNESS PATHWAY

	Term 1a		Term 1b		Term 2a	Term 2b	Term 3a	Term 3b
	9	Rugby Activities Sports Fields and 3G	Res Run	Rugby Games – Sports Fields and 3G	Football - Sports Fields/3G	Football/Games - Sports Fields/3G	Hockey/Games – Astro Turf	Student Choice
10	Swimming		How To Train in a Gym – Types and methods of training		Student Choice	Student Choice	Student Choice	

## HEALTH AND LEISURE PATHWAY

	Term 1a		Term 1b		Term 2a	Term 2b	Term 3a	Term 3b
	9	Fun Rugby Activities Sports Fields and 3G	Res Run	Fitness Games – Sports Hall		Ball Games – Sports Hall	Games Activities – Fields	Striking Games - Playing Fields/Astro
10	Swimming		How To Train in a Gym – Types and methods of training		Student Choice	Student Choice	Student Choice	



# Year 11 Girls PE and Games

This programme is subject change.

## COMPETITION PATHWAY

Term 1a		Term 1b	Term 2a	Term 2b	Term 3a	Term 3b
G	Hockey Astro Turf	Football Sports Fields	Netball Courts	Rugby Sports Fields	Student Choice	
	Res Run					
PE	Fitness & SAQ Training Sports Hall	Gymnastics/Fitness Sports Hall	Student Choice	Student Choice	Student Choice	

## HEALTH AND FITNESS PATHWAY

Term 1a		Term 1b	Term 2a	Term 2b	Term 3a	Term 3b
G	Hockey Astro Turf	Football Sports Fields	Netball Courts	Rugby Sports Fields	Student Choice	
	Res Run					
PE	Fitness Gym/Studio	Gymnastics/Fitness Sports Hall	Student Choice	Student Choice	Student Choice	

## HEALTH AND LEISURE PATHWAY

Term 1a		Term 1b	Term 2a	Term 2b	Term 3a	Term 3b
G	Fun Hockey Sports Hall	Fun Games Sports Fields	Fun Netball Sports Hall	Fun Games Sports Fields	Student Choice	
	Res Run					
PE	Fitness Class Studio	Gymnastics Sports Hall	Student Choice	Student Choice	Student Choice	

# Induction & First Day of Term

## Induction

Year 11 Pathway students should arrive at Sidcot on Friday 1 September. During that day and over the course of the weekend boarding staff will provide an full induction for students to ensure they are prepared for the start of term on Monday 4 September.

## First Day of Term

On the first day of term students should report to their tutor in their classroom at 08:30. They will be shown where this is during their induction.



# Opportunities to Visits

## Boundary Walk – Thursday 7 September, 15:00 to 16:00

The Boundary Walk is a long standing tradition where students walk around our beautiful campus together during the first week of term. Parents are also invited to enjoy the walk with us and refreshments are served afterwards.

## New Parents Drinks & Hog Roast – Friday 8 September, 17:30 to 20:00

To introduce parents to the School, and each other, we invite all new parents to join the Headmaster and other members of staff for drinks. This is followed by a Hog Roast at 18:30 to which all parents are invited.

An invitation with further details will be sent nearer the time.

# What to bring

## Stationery

The basic stationery students require is as follows;

- 2 pens - black for exams but blue is fine for classroom use
- 1 purple pen
- 1 green pen
- 2 pencils
- Eraser
- Sharpener
- Ruler
- Compass
- Protractor
- Calculator - Casio CLASSWIZ FX-83GT X

The following are also useful to have:

- Coloured pens or pencils
- Scissors
- Glue stick
- Highlighters

All of the above items are available from the library stationery shop and can be added to the termly extras bill.

## Sports Kit

On days when students have Games lessons they will be responsible for bringing the correct clothing. There are some compulsory elements of sports clothing and other optional elements. Some elements will also vary depending the season.

On Thursdays, students should attend School wearing sports kit in preparation for their PASS activity in the afternoon, unless otherwise notified. This should include tracksuit trousers or leggings.

A full Sportswear Clothing Guide can be found at [sidcot.org.uk/uniform](http://sidcot.org.uk/uniform)

Boarding students will be provided with an additional list in their Boarding Handbook to ensure they have everything they need for life in a boarding house.

# Photo ID cards

All students have a photo ID card which must be carried at all times. The School is a secure site and the card allows access to different parts of the School which has keypads at all entry points.

Students must email a photo of themselves prior to arrival in September to [admissions@sidcot.org.uk](mailto:admissions@sidcot.org.uk).

Lost cards can be replaced, at a cost of £5, your children arrange this through their tutor.

Students who have provided their photos will be issued with their ID card on their induction day.

# Uniform

At Sidcot all students from Year 7 until Year 11 wear uniform. There is a comprehensive clothing range available to ensure students can be comfortable and smart both inside and out of the classroom.

Downloadable guides have been produced to give parents, guardians and pupils all the information necessary about Sidcot's regulations and uniform, dress code and possessions in school. These can be found at [sidcot.org.uk/uniform](http://sidcot.org.uk/uniform)

If you have any queries, please email [uniform@sidcot.org.uk](mailto:uniform@sidcot.org.uk)

All Sidcot School uniform can be bought online. Alternatively, you can purchase all uniform through Deane & Sons of Cheddar.

Deane & Sons  
Bath Street  
Cheddar  
Somerset  
BS27 3AA

Telephone: 01934 742530  
Email: [info@deanesofcheddar.co.uk](mailto:info@deanesofcheddar.co.uk)

## Deane & Sons Opening Hours:

Monday - Thursday: 09:00-17:00  
(closed 13:00-14:00)  
Saturday: 09:00-16:00  
(closed 13:00-14:00)  
Friday and Sunday: Closed



# Digital technology in the classroom

## Bring Your Own Device (BYOD)

Technology is a significant part of all of our lives. The way we do things around the home and the way we do things at work are constantly changing as the technology develops. There is plenty of research evidence to support the value that technology brings to the educational experience including improved communication, practical research, collaboration, self-management, and digital citizenship.

## Who is required to have an IT device at Sidcot?

In the Senior School all students are expected to have their own IT device that they bring into school for use in lessons. Many will already have a device, however, if students or parents are unsure whether it meets the required specification, please email [byod@sidcot.org.uk](mailto:byod@sidcot.org.uk) where the team will be happy to advise and help.

To maintain a safe and secure learning environment, a filtered Internet connection will be provided for all students. They will not be permitted to use a personal broadband connection such as a 3G/4G/5G phone network.

## Who is responsible for IT devices in school?

Students are solely responsible for their device. They must bring it fully charged to school. As with other personally owned items, the School is not liable for loss, damage, misuse, or theft. Please arrange your own insurance cover for your child's personal belongings either through the Personal Effects Insurance (offered by the School), or by your own arrangements.

## Required Device Specification:

**10" screen or larger** - 10" is the minimum to ensure students can see the work they need to complete easily.

**Can use a stylus** - This is so notes can be taken in the lessons and any work requiring to be handwritten could be done on the device.

**Can use a keyboard** - A keyboard is needed to assist with tasks that require more typing e.g. essays or project write-ups.

**Be able to run Microsoft Word, PowerPoint, Excel and Teams/OneNote** - These are the core apps needed in school. The mobile version and online version are suitable for most tasks. If more is required, remote access can be used.

**Be a Microsoft, Mac (including MAC OS and iOS), or Android OS based device** - These are the operating systems we know work well with the school systems.

**Battery life** - 5 hours or more to ensure that only minimal or no charging is needed during the day.

**IMPORTANT: Does not have mobile data e.g. 4G/5G etc.**

**Free access to Microsoft Office for all Sidcot BYOD users** - This can be downloaded and used for free from the school whilst your child is a student at Sidcot.

# Is my child allowed to bring a mobile phone to school?

Following a period of discussion and research on the use of mobile phones in schools, we have taken the decision to restrict mobile phone usage.

Year 11 Pathway students can bring a mobile phone to school, however, they must be kept out of sight at all times during the school day, including break times, lunch, free time and after school. Students are able to use their phones in lessons if requested by the teacher.

As has always been the case, if you should need to contact your child in an emergency during the day, please call Reception who will be able to pass on a message.

We do hope we have your support on this, as we strongly believe the benefits are significant from an academic, social and wellbeing perspective.

## Monitoring progress

Grade reports are issued by email on an approximately half termly basis, to keep parents up to date with their child's progress. They include effort and achievement grades as well as written comments from teachers and an overview by the form tutor. Once a year, in the Summer Term, parents receive a full written report by email.

The first parents' evening takes place in the Autumn Term. It provides an opportunity to meet your child's tutor and Year Head and hear about their progress and how they're settling in.

In Summer Term there is another parents' evening where parents meet all their child's teachers face to face.

Parents are given a log-in which enables them to view the School intranet where students and teachers share information and homework.

They can access information about their child's timetable, and keep up to date with their homework, performance and attendance.

## The Blue Book

At the beginning of the Autumn Term, students will be given 'The Blue Book' which clearly outlines rules and guidelines for behaviour at school.

It is important that students carefully read this booklet, so they are clear about expectations at Sidcot which will help them settle in smoothly.

# The House system

All students and staff at Sidcot are assigned to a virtual house when they join our school community (North House, East House, South House and West House). The house system helps students to build friendships across the year groups and provides a focus for school events and activities throughout the year.

These include house sports, 'Sidcot's Got Talent', team building trips and activities, inter-house music competitions, charity fundraising and much more.

Students are notified during the School holidays before they join which house they have been assigned to.

## Food

Students have break after Period 2 (Period 3 on a Wednesday) where they can have a drink, a biscuit and fruit. Lunch is after Period 4 (Period 5 on a Wednesday),

Our menus are varied, balanced and healthy and full of fresh local ingredients. You can view a sample of our weekly menu on the website: [www.sidcot.org.uk/parent-information/food](http://www.sidcot.org.uk/parent-information/food)

Straight after school, students may help themselves to tea, coffee, hot chocolate, milk or juice in the Refectory. Break, lunch and supper are all included within the school fees.

The Hub is Sidcot's café where students can buy drinks and snacks, smoothies, paninis and fruit pots at various times throughout the day. Students can use their photo ID card to make purchases from the Hub. Credit can be added to the ID card using WisePay – parents can access this via [www.sidcot.org.uk/parent-information/sidcot-intranet](http://www.sidcot.org.uk/parent-information/sidcot-intranet)

## Meeting for Worship

Once a week on a Friday morning, the school community participates in Meeting for Worship. This may take place as a whole school community in the Quaker Meeting House, in Form groups, in Houses or in Tutor groups. This period of silence and stillness enables our students space and time to reflect and listen.



# Our policies

Sidcot School is an inclusive learning community; this includes students who are 'gifted and talented' and those with specific learning difficulties.

## Admissions policy

Sidcot School is not selective beyond our expectation that students will cope with mainstream curriculum. Students can be accepted throughout the year from Pre-School to Year 9 providing space is available. Students are able to join examination Years 10 and 12 up to half a term late, at the School's discretion, but students will not be accepted into Years 11 and 13.

For entry to the Sixth Form students must gain a minimum of 5 'standard' GCSE passes at Grade 4 or above. For those subjects students wish to take at A Level we recommend Grade 5 or above, to study the IB Diploma you must have at least Grade 5 in Maths and English.

## Waiting lists

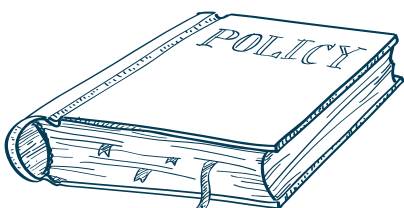
Sidcot is a popular school. When there are no available places, students are invited to join the waiting list for their chosen year group.

For a complete version of our Admissions Policy, please see: [sidcot.org.uk/admissions-process](https://www.sidcot.org.uk/admissions-process)

## School policies

The following policies are available for prospective parents to view online and/or download from: [sidcot.org.uk/policies](https://www.sidcot.org.uk/policies)

Child Protection and Safeguarding Policy; Staff Student Code (Staff Behaviour Policy); Missing Child Policy Procedures (Junior School); Missing Child Policy Procedures (Senior School); Supervision of Pupils – (Junior School); Supervision of Pupils (Senior School); Uncollected Child Policy Procedure; Behaviour Policies; Anti Bullying Policy (including cyber-bullying); Behaviour Policy (Senior School); Behaviour Policy (Junior School); Behaviour Policy (EYFS); Behaviour Policy Procedure (Out of School Care and Holiday Clubs); Smoking, Drugs & Alcohol Policy; Reasonable force and physical restraint; Search and Confiscation Policy; Permanent Exclusions Policy; Health and Safety Policy; Medical Policy (including First Aid); Supporting Students with Medical Conditions and Disabilities Policy; Asthma Policy; Mental Health and Wellbeing Policy; Educational Trips and Visits Policy; Equal Opportunities Policy (children); Digital Security and Safety; Acceptable Use Policy – Students; Acceptable Use Policy – Staff; Acceptable Use Policy – Visitors; Digital Security Policy; Privacy Notice – Pupils; Privacy Notice – Staff; Recruitment, Selection and Disclosure Policy and Procedure; Recruitment of Governors Policy; Volunteers Policy; Whistleblowing Policy; Curriculum Policy; Special Educational Needs and Disability (SEND); English as an Additional Language Policy; Gifted and Talented Policy; Foundation Stage Policy; Language Policy; Admissions Policy; Attendance Register Policy; Careers Education, Information, Advice and Guidance Policy; Complaints Policy and Procedure; Fundraising Policy; Hiring and Letting of Facilities Policy; Money Laundering Policy; Anti Bribery Policy; Visitor Policy.





# Sidcot people



**Head - Iain Kilpatrick**  
iain.kilpatrick@sidcot.org.uk



**Incoming Head - James Jones**  
james.jones@sidcot.org.uk



**Deputy Head (Pastoral) - Joanna Leite**  
joanna.leite@sidcot.org.uk



**Deputy Head (Academic) - Christian Hughes**  
christian.hughes@sidcot.org.uk



**Head of Pathway - James Milne**  
james.milne@sidcot.org.uk

# Admissions team

We would love to hear from you. Please do not hesitate to give us a call or email us.  
Please see our website for a full staff list: [sidcot.org.uk/who-we-are](http://sidcot.org.uk/who-we-are)



**Claire Rundle**  
Head of Admissions  
+44 (0) 1934 845 212  
[claire.rundle@sidcot.org.uk](mailto:claire.rundle@sidcot.org.uk)



**Rachael Coates**  
UK Registrar  
+44 (0) 1934 845 236  
[rachael.coates@sidcot.org.uk](mailto:rachael.coates@sidcot.org.uk)



**Ailsa Williams**  
International Coordinator  
+44 (0) 1934 843 102 (ext. 335)  
[ailsa.williams@sidcot.org.uk](mailto:ailsa.williams@sidcot.org.uk)



**Zuzi Stainer**  
Admissions Administrator  
+44 (0) 1934 843 102 (ext. 297)  
[zuzi.stainer@sidcot.org.uk](mailto:zuzi.stainer@sidcot.org.uk)



# Sidcot

Live Adventurously

- 1 Senior School
- 2 Junior School
- 3 Sports Centre
- 4 Equestrian Centre
- 5 Arts Centre
- 6 Trevelyan Library
- 7 Teaching Block
- 8 Science Block
- 9 Meeting House
- 10 Health Centre
- 11 School House Girls
- 12 School House Boys
- 13 Wing House
- 14 Newcombe House
- 15 Combe House
- 16 Meadows
- 17 Main Car Park
- 18 Junior Car Park
- 19 Senior Drop-Off & Pick Up
- 20 School Garden
- 21 James O'Connell Peace Field
- 22 Junior Sports Field

To  
Bristol



To  
Cheddar



# Senior School Floor Plan

## Ground Floor



## First Floor



## Key

- Classroom
- Corridor / Common Place
- Office / Clerical
- Toilet
- Storage / Technician's Area / Housekeeping
- Boarding House
- Sixth Form

# Notes

A series of horizontal dotted lines for writing notes.



# Notes

A series of horizontal dotted lines for writing notes.



Sidcot School  
Oakridge Lane  
Winscombe  
North Somerset  
BS25 1PD



+44 (0)1934 843102 | [info@sidcot.org.uk](mailto:info@sidcot.org.uk) | [www.sidcot.org.uk](http://www.sidcot.org.uk)

    [sidcotschool](#)

Registered Charity Number: 296491