

EAL Foundation
Course for Years 8-9

Junior Pathway

sidcot.org.uk



Sidcot
Live Adventurously

An introduction

Junior Pathway

A British education is globally recognised as being an excellent foundation for children to prepare them for life in the international world in which they live. It offers them the breadth of opportunity both inside and outside the classroom that, for many, is just not available in their own countries. This is why many families will choose to send their children to study at schools in the UK.



One of the key elements of success for children who are able to benefit from this experience is the **power of the English language**. Developing skills in communication - speaking, listening, reading and writing - in English at the earliest opportunity, will put those pupils firmly ahead when it comes to gaining **internationally recognised qualifications** and will give them the confidence they need to achieve their goals.

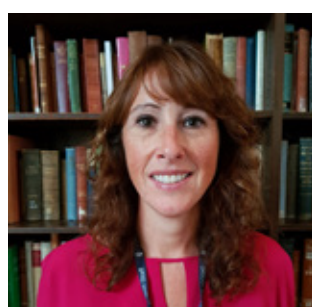
This **Junior Pathway** programme for children between the ages of 12-14, has been designed to offer younger international pupils a holistic pre-GCSE curriculum with a strong emphasis on English skills development, and will provide excellent preparation for the GCSE course at Year 10 (14+) entry. Pupils will enjoy the advantages of being able to integrate with native English speaking students for a large part of their timetable, whilst still receiving specialist language support.

English as an Additional Language sessions are delivered by **qualified and experienced specialists** to help students whose first language is not English learn to **communicate well** with both native and non-native speakers of English in most everyday situations.

Depending on needs, Geography, History, Maths and Sciences may be taught as EAL sessions by specialist tutors. Years 8-9 Junior Pathway curriculum subjects will run parallel to maximise opportunities for students to study at the right level for their ability in each subject.



In order to encourage integration, Tutor Groups, Art, Computing, Drama, Sport, Music and Technology will be taken as mainstream subjects, together with other students of their own year group who are not part of the Pathway programme.



Please contact me for any further information and I look forward to meeting you if you are able to visit us.

Elizabeth Teixeira

Head of EAL

Email: Elizabeth.Teixeira@sidcot.org.uk

Programme content

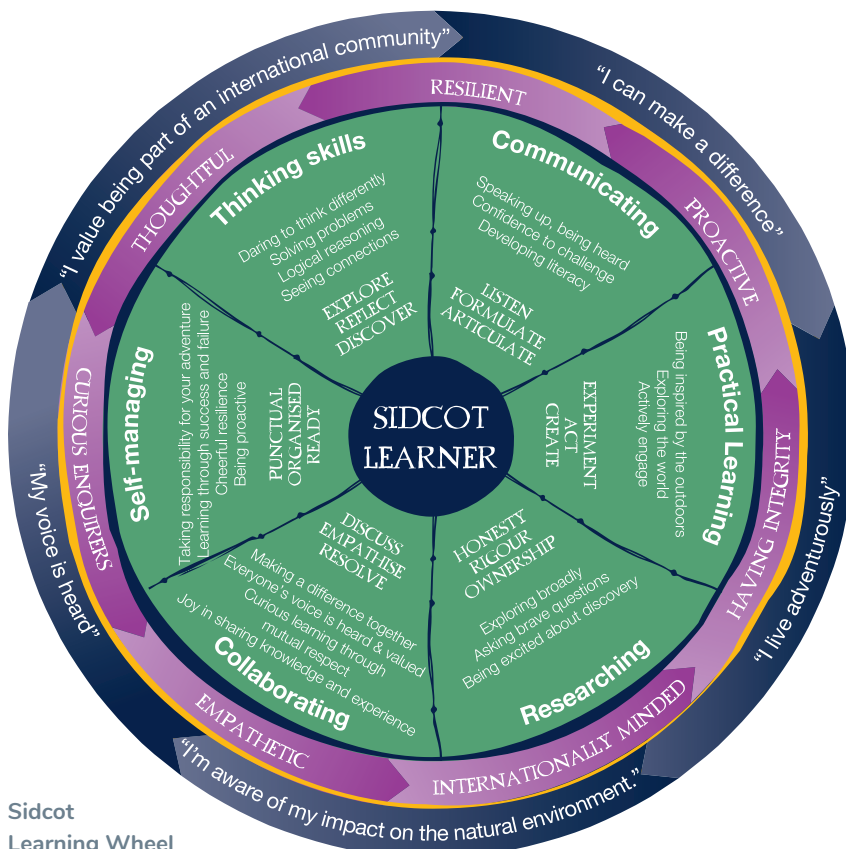
English as an Additional Language (EAL)

Unlike schools who provide some one-to-one or small group sessions for pupils who need additional English language support, the Junior Pathway will provide a much more **intensive** and **structured programme**. Pupils will normally have 10 sessions a week of EAL classes where they will be taught by **specialist teachers** to improve their English language and study skills with the aim of achieving an **internationally recognised EAL qualification**.

Cambridge Global Perspectives Challenges (CGPC)

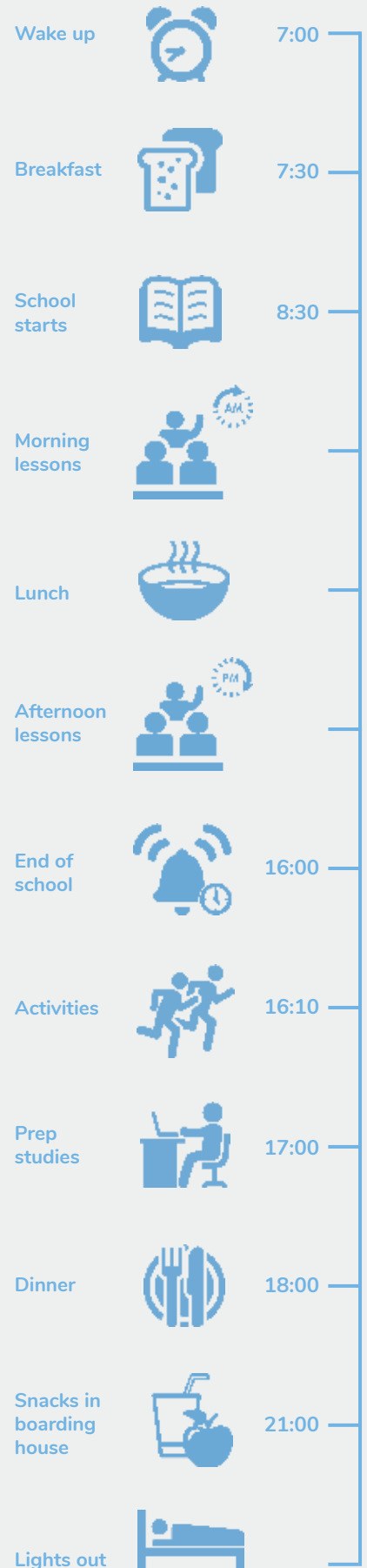
At Sidcot there is a bespoke style to the teaching and learning programme known as the **Sidcot Learning Wheel**. The skills of research, analysis, evaluation, reflection, collaboration and communication are an integral part of the individual pupil development which will not only equip them for higher education and employability, but also develop their **social skills, emotional intelligence, resilience** and **determination** to make a difference in the world.

To underpin this for our international students' and as an addition to their syllabus, international students will also undertake **Cambridge Global Perspectives Challenges** which include project topics such as Human Rights, Globalisation, Sustainability and The Human World – all part of the Quaker ethos at Sidcot. They will be able to achieve Gold, Silver or Bronze certification, which is awarded in recognition of their ability to appreciate their responsibility to the community and wider world.



Sidcot Learning Wheel

Boarders typical daily time line





An example Junior Pathway Timetable for pupils in Years 8 and 9

Period	Monday	Tuesday	Wednesday	Thursday	Friday
1	PE#	Geography*	CGPC*	Science*	EAL*
2	EAL*	EAL*	Maths*	EAL*	Maths*
3	Assembly#	PSHE#	EAL*	Flexible study#	Meeting for Worship#
4	Drama#	Science*	Art#	EAL*	Computing#
5	EAL*	Maths*	Art#	Maths*	EAL*
6	Technology#	Science*	EAL*	Music#	Games#
7	Technology#	Geography*	CGPC*	EAL*	Games#

*Pathway EAL subjects | #Mainstream integrated subjects

Each taught session of the day lasts for 50 minutes.

Measuring Success

Following an initial assessment of both academic and cognitive skills, Junior Pathway pupils will have **on-going progress reviews** both in their language and subject knowledge development, which will be **regularly communicated to them and to parents** and used to determine individual learning targets. Depending on progress, pupils will be able to transfer to one, several, or all mainstream subjects at termly intervals within their peer group.

Pupils will follow the University of Cambridge ESOL-accredited syllabus for **KETfS** (Key English Test for Schools) or **PETfS** (Preliminary English Test for Schools) to develop their speaking, listening, reading and writing skills. Those pupils who are more advanced, will be able to sit Cambridge **FCEfS** (First Certificate English for Schools). Academic success will be measured by these formal external examinations.

Boarding

Looking after our younger boarders

Our boarding houses are friendly, well equipped and creatively furnished to provide a real 'home from home' experience. Matrons and house staff are very mindful of the needs of younger boarders who may be living quite some distance away from their families – many for the first time – and ensure that they are always there to talk, to listen and to share the experiences of their day when they return to the house each evening.



Older students act as 'big brothers and sisters' to support this high level of pastoral care and often take part in activities and house entertainment to ensure that they are fully occupied and enjoying their time as a boarding student.



At weekends, there are many different trips, outdoor activities, clubs and social events which ensure that friendships can be further developed outside the classroom.

Food is an important part of any boarding pupil's life! All pupils and staff at Sidcot enjoy a wide variety of tastes and flavours from around the world, with plenty of fresh and healthy options available at all meal times including vegetarian options. Provision is also made for special dietary, medical or religious needs.

Physical and mental healthcare is also well provided by a team of professionals on site. All pupils are encouraged to be involved with some form of physical exercise outside of the timetable as well as finding time to relax and unwind with friends.



Full details can be found in our Boarding Handbooks and the School Prospectus.

Sidcot life

The benefits of joining the Junior Pathway (JP)

- JP pupils will receive an intensive EAL programme, but will also be integrated within their own peer group for many subjects and activities.
- JP pupils will be at a similar level on arrival and will not feel disadvantaged by those who do not need as much EAL support – allowing their confidence and ability to grow at their own pace.
- JP pupils will be well prepared for entry to Year 10 and the start of the more formal external examinations they will need in order to progress towards Higher Education.
- JP pupils will have the opportunity to make new friendships from around the world as well as those who live in the UK.



Programme costs

Annual fees £37,530 - £38,400

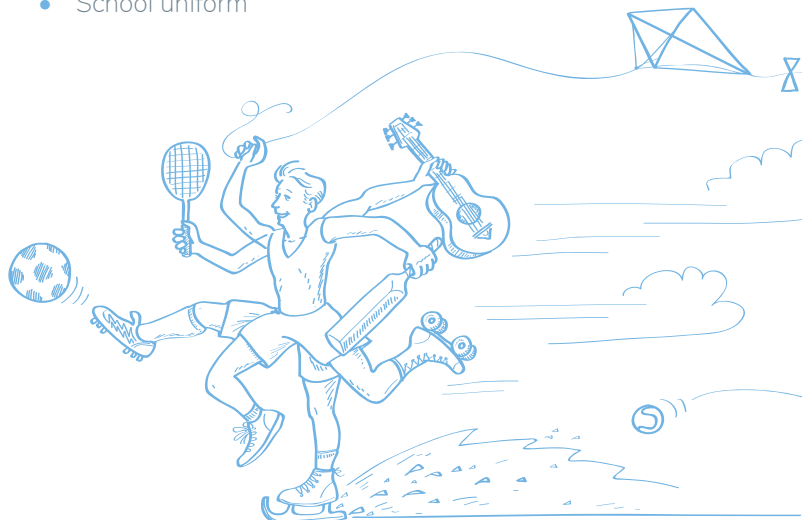
(Junior Pathway students will receive a £3,500 loyalty discount if they continue their studies at Sidcot after completing the full 1 year Pathway programme)*

Fees will include:

- Group collection and return to airports at the start and end of each term (plus Autumn half-term only)
- Administration fee for pupils requiring Tier 4 visa
- All tuition, books, meals and laundry
- Weekend activities
- UK school trips

Fees do not include:

- Any additional one-to-one individual EAL lessons, if required
- Travel, health insurance and pocket money
- Overseas school trips
- School uniform



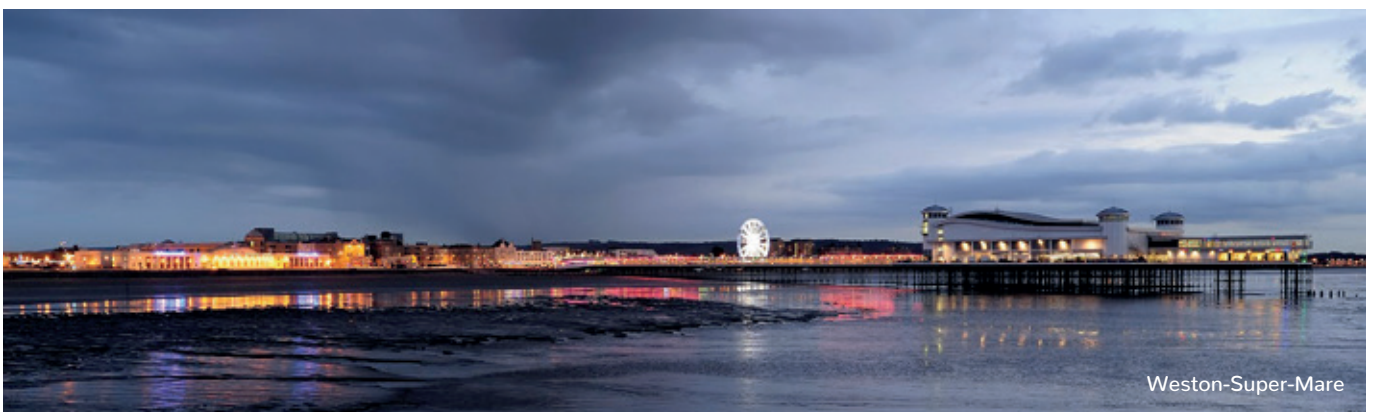
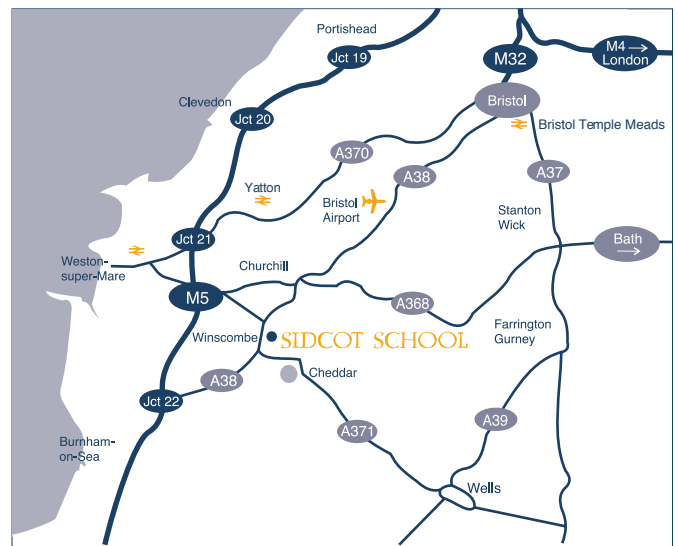
Location

Travel information

Sidcot is located in the South West of England, amongst the Mendip Hills, one of the UK's most beautiful rural locations.

The School is only 13 km (15 minutes drive) from Bristol International Airport with flights to worldwide destinations. It is also within easy access of London International Airports and mainline rail services (2 hours to London Paddington).

In contrast to the peaceful and rural setting of the School campus, the boarding pupils also have the benefit of the vibrant city of Bristol less than 30 minutes away. Here they will find numerous cultural festivals, theatres and cinemas, shopping malls and entertainment venues. The Victorian seaside town of Weston-Super-Mare is only 20 minutes away, with its traditional pier, promenade and bracing sea air for those who really want to experience stepping back in time when children used to build sandcastles and eat ice-cream! Great fun for our younger boarders!





Cheddar Gorge



The annual Bristol International Balloon Fiesta pictured over the famous Clifton Suspension Bridge

+44 (0)1934 845212 | admissions@sidcot.org.uk
Oakridge Lane Winscombe BS25 1PD
sidcot.org.uk